



ROYAL  
**WAGENBORG**



**300 T SHEERLEG**

## GENERAL

Name Triton  
 Owner Wagenborg Towage  
 Type Floating crane; sheerleg not propelled  
 Classification Lloyd's Register, 100A central sheerleg

Works Wreck Removal, Civil Construction  
 pontoon including two buoyancy pontoons. pontoon seagoing, only sheltered working

Call sign PF2984  
 Certificate nr. 1868  
 ENI 02204813  
 IMO 7607443  
 Port of Registry Groningen, The Netherlands  
 Flag Dutch  
 Built 1976

## MAIN DIMENSIONS

LOA pontoon 38.5m  
 LOA lowered boom 91.0m (forwards on pontoon)  
 BOA 11.1m sailing  
 18.1m working till 250t  
 24.1m working till 300t (extra side pontoons)  
 Air draft min 4.5m above waterline  
 Air draft max 57.0m above waterline  
 Light Ship 949m3 empty. 1372m3 max.  
 Draught (mld.) 1.77m

## TONNAGE

GT 532  
 NT 159

## LIFTING CAPACITY

Main boom 300t (2x 150t)  
 Top 150t (2x 75t)  
 Runner main boom 20t  
 Runner top 5t

## TANK CAPACITIES

Fuel Oil 40m3  
 Fresh Water 10m3  
 Ballast Water Total 75m3

## MAIN EQUIPMENT

Thruster 2x aft  
 Power 2x 294kW (2x 216HP)  
 Speed 9 km/h Towed by tug "Gyas"  
 Generator 380V – 80kVA

## AUXILIARY EQUIPMENT

Generator 380V – 30kVA  
 Pumps 2x internal for ballasting  
 2x submersible for ballasting / salvage  
 Fire extinguisher 7x extern powder extinguisher

## DECK EQUIPMENT

Mooring Winch 3x (1x bow; 4 drums / 2x aft 1 drums)  
 Anchor 1x aft 1.0t

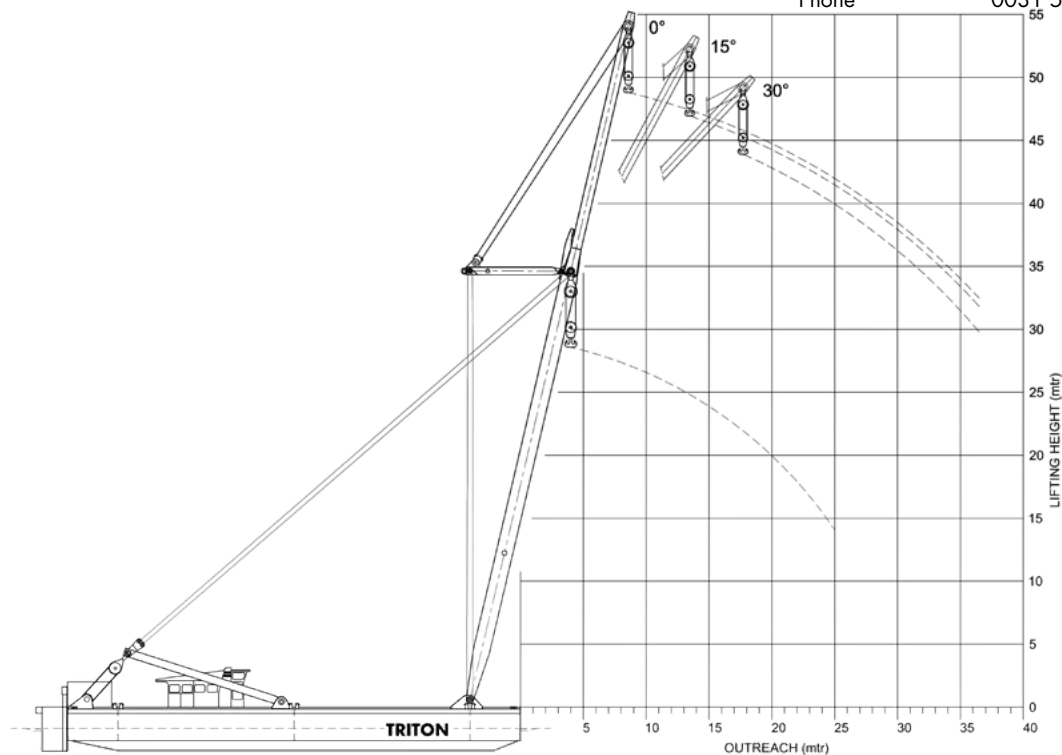
## ACCOMODATION

Cabins 4 cabins, 2 beds per cabin  
 Galley, Day-room, Shower

## BRIDGE

GPS, 2x VHF, Searchlights.

Phone 0031 596 636 230



Particulars believed to be correct, but not guaranteed.